

**Brandy L. Bowling**

Academic interests include pedagogical content knowledge of community college science instructors and professional development of post-secondary science faculty.

**Mwenda O. Kudumu**

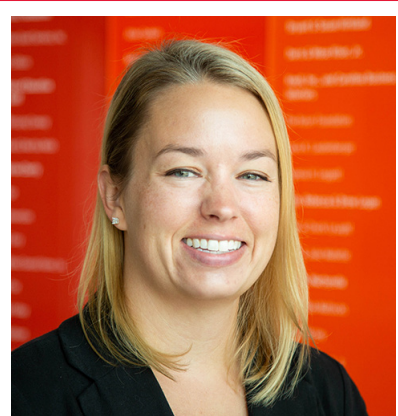
Mwenda is interested in popularizing science and technology in Black communities through increased involvement with informal science education institutions.

**Lynn Chesnut**

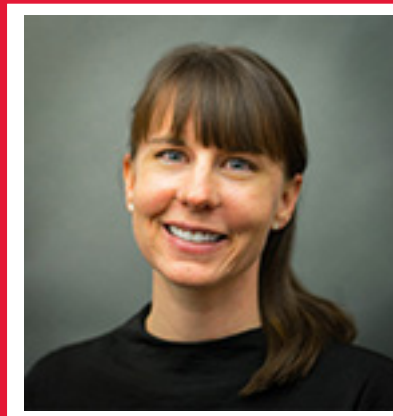
My research interests are in barriers to the understanding of the nature of science.

**Katlyn May**

I am interested in understanding and improving environmental health literacy among various groups of learners.

**Megan Ennes**

Megan's area of research includes informal science education, science capital and habitus, and youth science interest and career aspirations.

**Shana Lee McAlexander**

I am investigating the role and impact of community organizations (industry, government, and university) on STEM career pipelines.

**Shannan George**

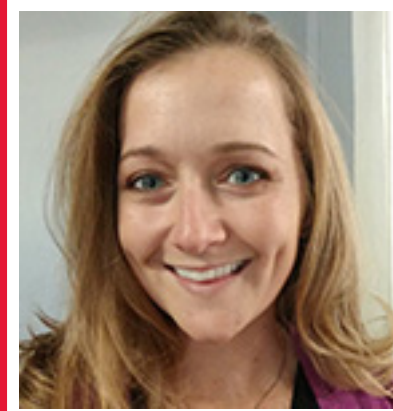
Shannan's research interests include science education in informal settings. Her current research focuses how citizen science projects influence both citizens and scientists.

**Kayla Norville**

My current research involves exploring the characteristics of pre-service science teachers PCK. Other research interests include citizen science and social network analysis.

**Katie Green**

My research interests center around how culture affects science teaching and learning, specifically regarding evolution.

**Michelle Nugent**

Explores the persistence factors associated with success in university STEM majors, particularly focusing on underrepresented students and biology education.

**Teri Hoffman**

Focuses on exploring and comparing event-driven changes in teacher self-efficacy in novice teachers from differing licensure routes and the impact of these changes on their teaching.

**Megan Polzin**

Research interests include alternative conceptions related to cancer among high school and college students, informal education, and game-based learning.

**Dorothy Holley**

A science teacher, strong supporter of NC public schools and teacher perspectives. Research interests focus on classroom experiences.

**Arif Rachmatullah**

My topics of interest are K-16 students' cognitive process when learning science, scientific modeling, and philosophy of science and scientific thinking.

**Pamela Huff**

Research interests center around science programs within private schools in NC. I am interested in the science achievement of students who receive an opportunity scholarship from the state.

**Emma Refvem**

Emma's research interests include teacher professional development, science capital & habitus, and classroom technology integration.

**Vance Kite**

Research Interest: Integrating computer science concepts into science curriculum through computational thinking practices.

**Kathryn Rende**

Kathryn is a former museum educator and environmental journalist. Her research interests lie at the intersection of science education and communication.